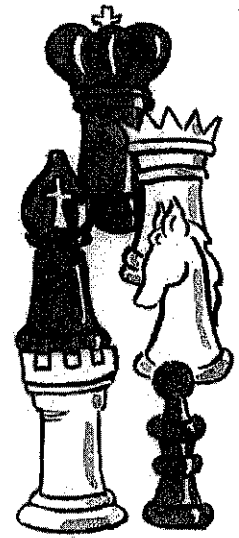


Joining sentences



The sentences below are about the game of chess, but they are in the wrong order. Read through the sentences and decide on the best order.

Computers play chess. Chess remains popular today. There are sixteen pieces on each side. Chess is a game for two people. "Checkmate" means that the king cannot move without being taken by another piece. The board and the pieces can be in any two contrasting colors. Pieces move in different ways. Computers sometimes beat human champions. Chess is played on a chequered board. It seems complicated at first. Each side has one king, one queen, two knights, two bishops, two rooks, and eight pawns. The board is usually black and white. The game ends when one of the kings is "checkmated." Experts improve their game by learning special patterns of moves. Chess is a very old game.



Write the sentences in order here.

- 1
- 2
- 3
- 4
- 5
- 6
- 7
- 8
- 9
- 10
- 11
- 12
- 13
- 14
- 15

All these sentences about chess are very short. Join some of the sentences to make the piece of writing read more fluently. You may need to add, remove, or change some words, but make sure you keep all the main ideas. Write out your sentences on a separate sheet of paper.

